

# Care and Feeding of Telex Radio Dispatch Systems IP-223

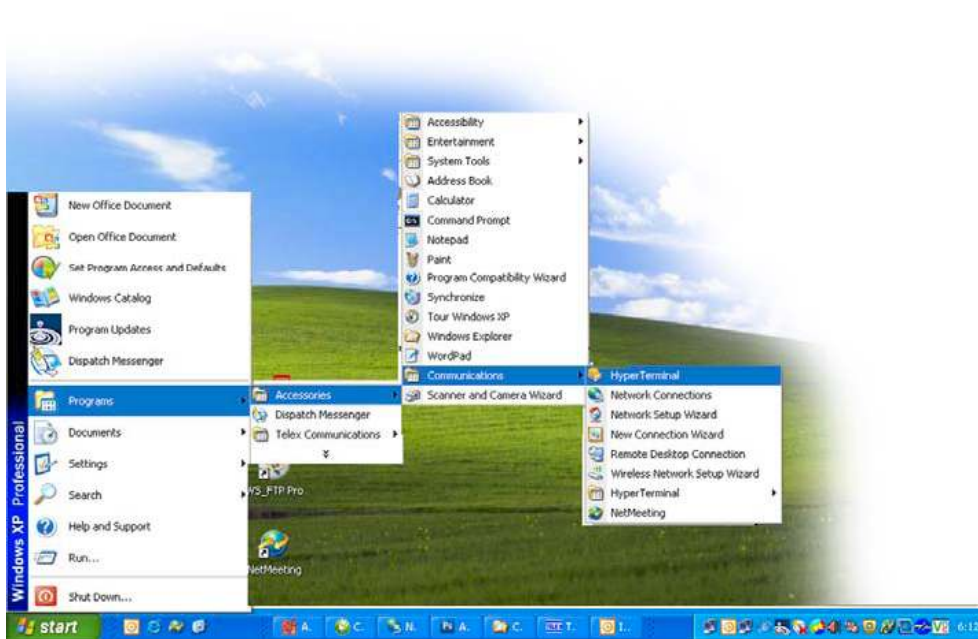
## Using HyperTerminal to configure IP-223 initial Settings

**NOTE: J35 must be in the A position.**

To assign the IP Address and Network Mask using HyperTerminal, do the following:

1. Connect the **IP-223** to your PC using a DB-9 serial cable.
2. From the Start menu on the computer, open the HyperTerminal Application.  
(Start|Programs|Accessories|Communications|HyperTerminal).

*The HyperTerminal and Connection Description windows appear.*



3. In the Name field, enter **com**.



4. Click **OK**.

# Care and Feeding of Telex Radio Dispatch Systems

## IP-223

*The Connect To window appears.*



5. From the Connect Using drop down menu, select **COM1**.

6. Click **OK**.

*The Com1 Properties window appears.*



7. From the Bits per second drop down menu, select **19200**.

8. From the Flow Control drop down menu, select **None**

**NOTE:** These parameters may be different than the defaults depending on the selected Serial Port Parameters.

9. Click **OK**.

# Care and Feeding of Telex Radio Dispatch Systems IP-223

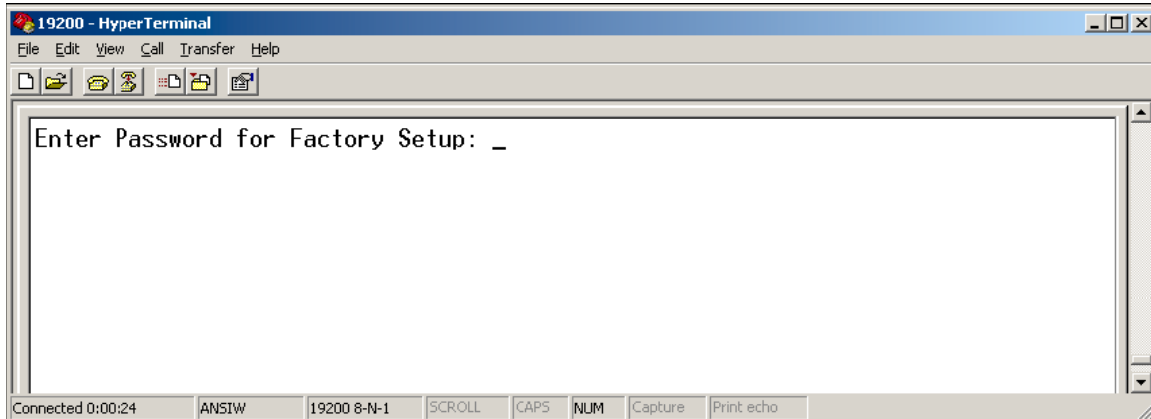
The Main HyperTerminal window appears.

10. In the main **HyperTerminal** window, enter an uppercase **S**.

11. Press **ENTER**.

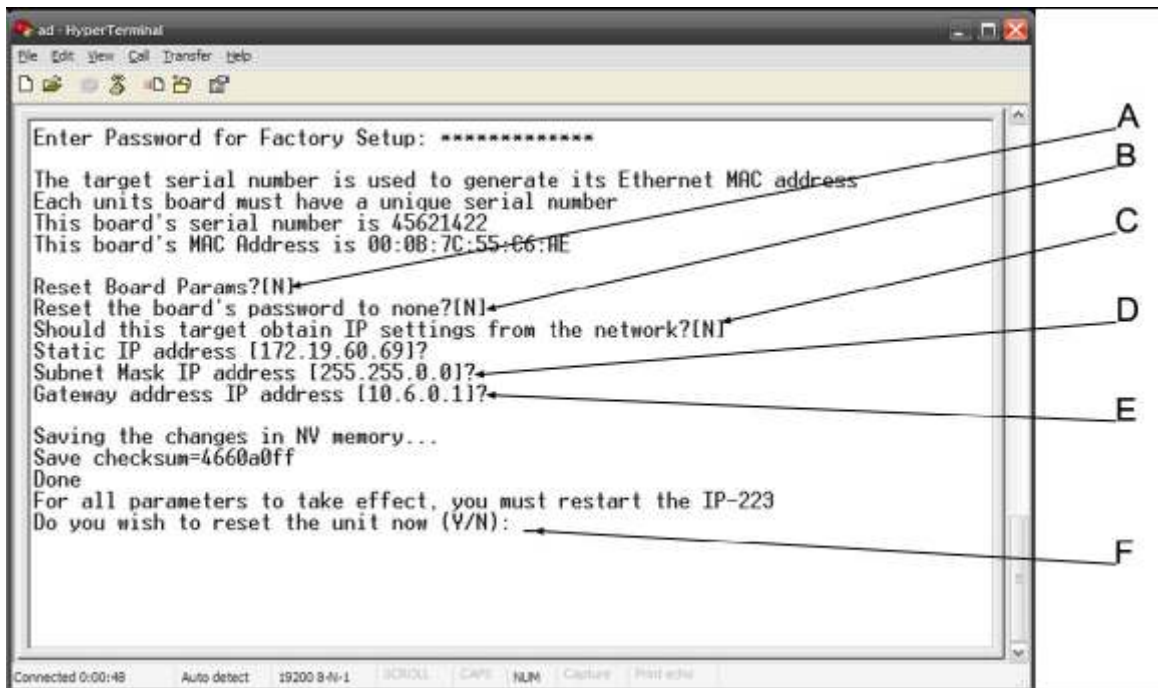
*Enter Password for Factory Setup* appears.

12. Enter **technobabble** for the factory setup password.



13. Press **ENTER**.

The serial port access window appears.



See next page for more detail.

# Care and Feeding of Telex Radio Dispatch Systems

## IP-223

The following is a brief explanation of the factory setup options shown:

*A* - Provides the ability to reset (back to defaults) the Board Parameters

*B* - Allows access to the password if it is new or forgotten.

*C* - Allows the unit to get an IP Address via DHCP, or to manually set the IP Address.

*D* - Allows the Subnet Mask to be manually entered or changed.

*E* - Allows the Gateway Address to be manually entered or changed.

*F* - Provides the ability to reset the unit.

14. When "Reset the Board's Parameters" appears, type **Y** to reset the board's parameters, otherwise, type **N**.

15. Press **Enter**.

16. When "Reset the Board's password to None" appears, type **Y** to reset the board's password number to none, otherwise, type **N**.

17. Press **Enter**.

18. When "Should this target obtain IP settings from the network" appears, type **Y** to obtain the IP settings from the network, otherwise, type **N**.

19. Press **Enter**.

20. When "Static IP Address" appears, enter the **IP Address** of the IP-223, if necessary.

21. Press **Enter**.

22. When "Subnet Mask IP Address" appears, enter the **Subnet Mask** IP Address, if necessary.

23. Press **Enter**.

24. When "Gateway address IP Address" appears, enter the **Gateway** IP Address, if necessary.

25. Press **Enter**.

26. When "Do you wish to reset the unit now" appears, type **Y** if changes were made on the window, otherwise enter an **N**.

27. If changes were made on the window, press **ENTER** to reset the IP-223, otherwise proceed to the next step.

*The changes made are saved to memory.*

28. Close the **HyperTerminal** program.